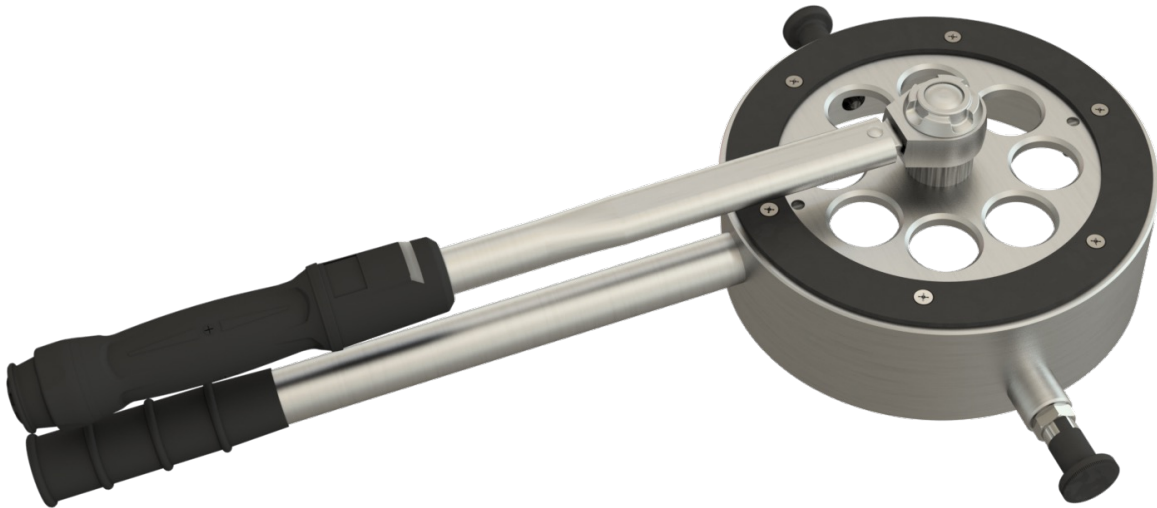




SAFKEG® 2851 CV TORQUE TOOL



Description

The Torque Tool (Part No 3976) is designed for the precise tightening and untightening of the SAFKEG® 2851 Containment Vessel (CV) screw-ring. Engineered with a built-in torque multiplier unit, this tool is purpose-built to achieve the necessary torque for securely sealing the CV lid.

The single-unit solution provides the safe and repeatable tightening of CV closure lid by a single operator. The specialised design ensures efficient and reliable performance in securing the SAFKEG® 2851 CV.

Croft Associates Ltd
F4, Culham Campus,
Abingdon, Oxfordshire,
United Kingdom
OX14 3DB

T: +44 (0)1865 407740
E: info@croftltd.com
W: www.croftltd.com

