



## **Type**

Designed as a B(U)F Package to the IAEA Regulations for the Safe Transport of Radioactive Material 1985 Edition (As Amended 1990).

## **Certification**

Certified by the UK Competent Authority: Certificate No GB/2917C/B(U)-85 - Pending

## **Description**

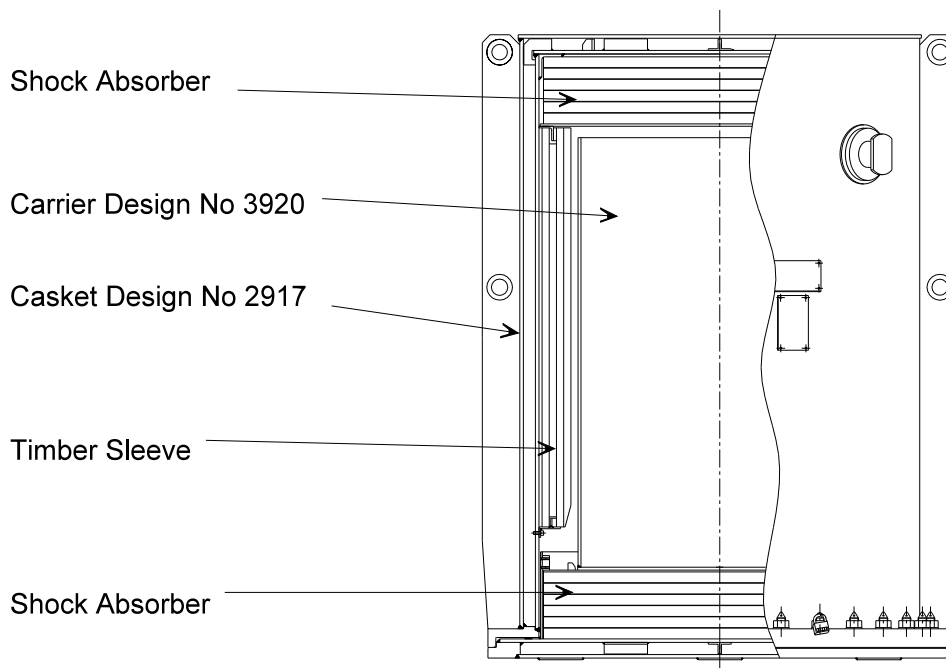
The Outer Container Casket Design No 2917 is a double shell welded cylindrical casket manufactured in low carbon steel with a circular bolted closure at the base. The space between the shells is filled with phenolic resin foam.

The inner carrier Design No 3920 is a large stainless steel assembly within which may be packed a wide range of shielded assemblies (such as industrial irradiations and teletherapy heads) containing gamma emitting sources. The top of the carrier is open enabling the shielded assembly to be lowered into place. The shielded assembly must be packaged within the carrier with a wooden load spreader that fits the shielded assembly.

## **Containment**

The sources within the shielded assembly cannot be assumed to be leaktight, therefore the ports and apertures of the shielded assembly must be sealed by a suitable method agreed with the Competent Authority. The source carriers and reusable shielding components must be immobilised by a method agreed with the Competent Authority.

## Section through Package Design No 2917C



### Approved Contents

The package is being licensed for certain specific industrial irradiators with contents of about 1kCi Co 60.

The package design is suitable for a wide range of shielded assemblies carrying large quantities (>10,000 Ci) of Co 60 or other gamma emitting nuclides. Approval for specific shielded assemblies will have to be obtained, but the testing carried out on the 2917 casket with a 10,000 kg shielded flask is expected to be sufficient to obtain Competent Authority B(U)-85 approval of the package for a wide range of shielded assemblies without further tests.

### Physical Data

Package Design No 2917C	Outer Casket 2917	Carrier 3920
External Diameter	1400 mm	983 mm
External Height	2158 mm	1485 mm
Internal Diameter	1030 mm	963mm
Internal Height	1530 mm	1475mm
Tare Weight	3700 kg	500 kg
Maximum Contents Weight		9500 kg
Maximum weight of Package Design N° 2917C		13700 kg

### Further Information

Contact: Croft Associates Ltd, B2 North Culham Estate, Abingdon, Oxon, OX14 3GY, UK  
 Tel: (01865) 407740 Fax: (01865) 407449 E-mail: [sales@croftltd.com](mailto:sales@croftltd.com)  
 Web site: [www.croftltd.com](http://www.croftltd.com)