

Package Design No CU112C

Package Name: SAFDRUM



Type

Re-usable Type A package for the shipment of solid samples.

Certification

The package meets the requirements for DOT Spec 7A Type A Packages as defined in 49 CFR (HM 181) and IAEA Safety Standard Regulations, TS-R-1. Details are given in the Evaluation Document compiled by CROFT Inc.

Description

Package Design No CU112C is designed to be robust and simple to use. The package consists of a stainless steel open head outer Drum Design No CU112 which carries a stainless steel and lead shielding pot Design No CU110 within polyethylene foam packing.

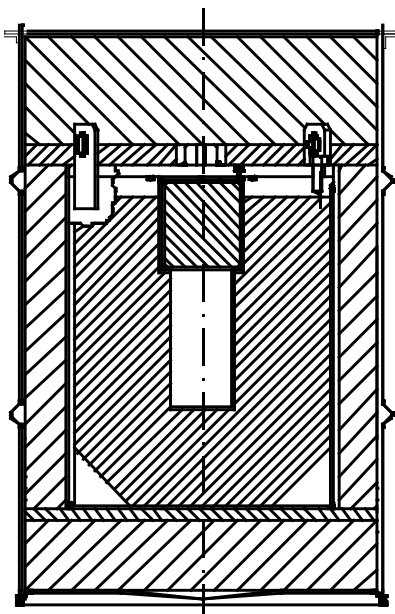
The Drum Design No CU112 is a stainless steel MIL Spec 30 gal drum fitted with a bolted flange type lid.

The shielding pot Design No CU110 is a lead filled vessel having a fabricated stainless steel shell and cavity walls and a bolted flange closure fitted with an O-ring seal.

Containment

The containment system is the shielding pot Design No CU110, with the containment being provided by the stainless cavity walls and the bolted flange closure fitted with an O-ring seal. The lid is provided with a test point for periodic leakage testing.

Section through Package Design No CU 112C



Approved Contents

Solid contents only may be carried: these should be wrapped or packed in suitable primary containers to prevent contamination of the shielding pot Design No CU110.

Maximum contents weight of shielding pot Design No CU110 (including the weight of any packing or additional shielding) is 11 lb (5.0 kg).

Radioactive contents are limited to A₁ for material in special form and A₂ for open form material, with the additional requirement that the external radiation levels of the package, as loaded and presented for transport, are within regulatory limits.

Physical Data

Package CU112C	Outer Container CU112		Packing		Inner Container CU110	
External Diameter	20.60"	523 mm			12.50"	318 mm
External Height	27.50"	699 mm			16.26"	413 mm
Internal Diameter	18.10"	460 mm			2.83"	71 mm
Internal Height	26.25"	666 mm			6.5"	165 mm
Tare Weight	37 lb	17 kg	25 lb	11 kg	721 lb	328 kg

Weight of empty package - 783 lb (356 kg).

Maximum weight of package Design No CU112C (including contents) - 794 lb (361 kg).

Further Information

Don Edling, CROFT Inc., 1105 Old Cannons Lane, Louisville, KY 40209, USA
Tel: 502 896 8597 Fax 270 721 0025 Email: dedling@insightbb.com
Web site: www.croftltd.com