

Package Design No CU112B

Package Name: SAFDRUM



Package Type

Re-usable Type A package for the shipment of solid or liquid samples.

Certification

The package meets the requirements for DOT Spec 7A Type A Packages as defined in 49 CFR (HM 181) and IAEA SS6 1985 Regulations. Details are given in the Evaluation Document compiled by CROFT Inc.

Description

Package Design No CU112B is designed to be robust and simple to use. The package consists of a stainless steel open head outer Drum Design No CU112 which carries a stainless steel and lead shielding pot Design No CU105 within polyethylene foam packing.

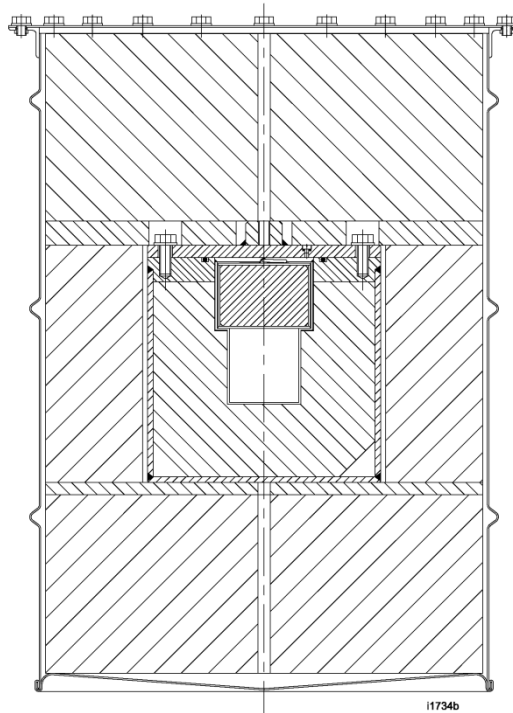
The Drum Design No CU112 is a stainless steel MIL Spec 30 gal drum fitted with a bolted flange type lid.

The shielding pot Design No CU105 is a lead filled vessel having a fabricated stainless steel shell and cavity walls and a bolted flange closure fitted with an O-ring seal.

Containment

The containment system is the shielding pot Design No CU105, with the containment being provided by the stainless cavity walls and the bolted flange closure fitted with an O-ring seal. The lid is provided with a test point for periodic leakage testing.

Section through Package Design No CU112B



Approved Contents

Solid or liquid contents may be carried. Suitable primary containers are required for liquid contents.

Maximum contents weight of shielding pot Design No CU105 (including the weight of any packing or additional shielding) is 5 lb (2.3 kg).

Radioactive contents are limited to A_1 for material in special form and A_2 for open form material, with the additional requirement that the external radiation levels of the package, as loaded and presented for transport, are within regulatory limits.

Physical Data

Package CU112B	Outer Container CU112		Packing		Inner Container CU105	
External Diameter	20.60"	523 mm			9.50"	241 mm
External Height	27.50"	699 mm			9.75"	248 mm
Internal Diameter	18.10"	460 mm			2.83"	71 mm
Internal Height	26.25"	666 mm			3.00"	76 mm
Tare Weight	37 lb	17 kg	22 lb	10 kg	234 lb	106 kg

Weight of empty package - 293 lb (133 kg).

Maximum weight of package Design No CU112B (including contents) - 298 lb (136 kg).

Further Information

Don Edling, CROFT Inc., 1105 Old Cannons Lane, Louisville, KY 40209, USA
Tel: 502 896 8597 Fax 270 721 0025 Email: dedling@insightbb.com
Web site: www.croftltd.com