

Package Design No CU111A



Package Name: SAFDRUM



Package Type

Re-usable Type A package for the shipment of solid or liquid samples.

Certification

The package meets the requirements for DOT Spec 7A Type A Packages as defined in 49 CFR (HM 181) and IAEA SS6 1985 Regulations. Details are given in the Evaluation Document compiled by CROFT Inc.

Description

Package Design No CU111A is designed to be robust and simple to use. The package consists of a stainless steel open head outer Drum Design No CU111 which carries a stainless steel and lead shielding pot Design No CU108 within polyethylene foam packing.

The Drum Design No CU111 is a stainless steel MIL Spec 55 gal drum fitted with a bolted flange type lid.

The shielding pot Design No CU108 is a lead filled vessel having a fabricated stainless steel shell and cavity walls and a bolted flange closure fitted with an O-ring seal.

Containment

The containment system is the shielding pot Design No CU108, with the containment being provided by the stainless cavity walls and the bolted flange closure fitted with an O-ring seal. The lid is provided with a test point for periodic leakage testing.

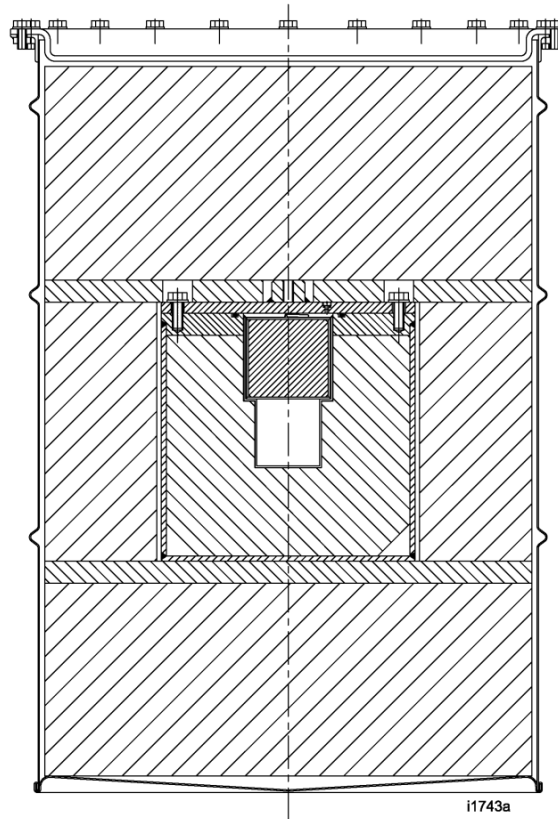
Approved Contents

Solid or liquid contents may be carried. Suitable primary containers are required for liquid contents.

Maximum contents weight of shielding pot Design No CU108 (including the weight of any packing or additional shielding) is 5 lb (2.3 kg).

Radioactive contents are limited to A_1 for material in special form and A_2 for open form material, with the additional requirement that the external radiation levels of the package, as loaded and presented for transport, are within regulatory limits.

Section through Package Design No CU111A



Physical Data

Package CU111A	Outer Container CU111		Packing		Inner Container CU108	
External Diameter	25.00 "	635 mm			11.50"	292 mm
External Height	35.00 "	889 mm			12.75"	324 mm
Internal Diameter	22.50 "	572 mm			2.82"	71 mm
Internal Height	32.50"	826 mm			3.00"	76 mm
Tare Weight	57 lb	26 kg	40 lb	18 kg	435 lb	197 kg

Weight of empty package - 532 lb (242 kg).

Maximum weight of Package Design No CU111A (including contents) - 537 lb (244 kg).

Further Information

Don Edling, CROFT Inc., 1105 Old Cannons Lane, Louisville, KY 40209, USA
 Tel: 502 896 8597 Fax 270 721 0025 Email: dedling@insightbb.com
 Web site: www.croftltd.com