

# Package Design No CU106C

Package Name: SAFDRUM



## Package Type

Re-usable Type A package for the shipment of solid samples.

## Certification

The package meets the requirements for DOT Spec 7A Type A Packages as defined in 49 CFR (HM 181) and IAEA SS6 1985 Regulations. Details are given in the Evaluation Document compiled by CROFT Inc.

## Description

Package Design No CU106C is designed to be robust and simple to use. The package consists of a stainless steel open head outer Drum Design No CU106, which carries a stainless steel and lead shielding pot Design No CU110 within polyethylene foam packing.

The Drum Design No CU106 is a stainless steel MIL Spec 30 gal drum fitted with a lid and closure ring.

The shielding pot Design No CU110 is a lead filled vessel having a fabricated stainless steel shell and cavity walls and a bolted flange closure fitted with an O-ring seal.

## Containment

The containment system is the shielding pot Design No CU110, with the containment being provided by the welded stainless cavity walls and the bolted flange closure fitted with an O-ring seal. The lid is provided with a test point for periodic leakage testing.

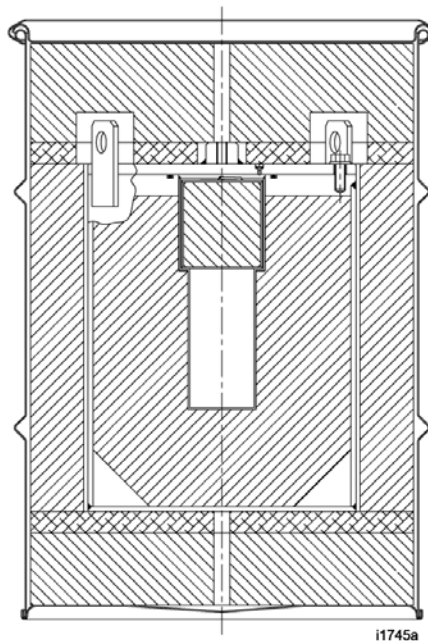
## Approved Contents

Solid contents only may be carried: these should be wrapped or packed in suitable primary containers to prevent contamination of the shielding pot Design No CU110.

Maximum contents weight of shielding pot Design No CU110 (including the weight of any packing or additional shielding) is 10 lb (4.5 kg).

Radioactive contents are limited to  $A_1$  for material in special form and  $A_2$  for open form material: with the additional requirement that the external radiation levels of the package, as loaded and presented for transport, are within regulatory limits.

## Section through Package Design No CU106C



## Physical Data

Package CU106C	Outer Container CU106		Packing		Inner Container CU110	
External Diameter	19.75"	502 mm			12.50"	318 mm
External Height	28.00"	711 mm			17.30"	440 mm
Internal Diameter	18.25"	463 mm			2.83"	71 mm
Internal Height	26.25"	666 mm			6.5"	165 mm
Tare Weight	34 lb	15 kg	22 lb	10 kg	710 lb	323 kg

Weight of empty package - 766 lb (348 kg).

Maximum weight of package Design No CU106C (including contents) - 776 lb (353 kg).

## Further Information

**Don Edling, CROFT Inc., 1105 Old Cannons Lane, Louisville, KY 40209, USA**  
**Tel: 502 896 8597 Fax 270 721 0025 Email: [dedling@insightbb.com](mailto:dedling@insightbb.com)**  
**Web site: [www.croftltd.com](http://www.croftltd.com)**