

Package Design No CU106A

Package Name: SAFDRUM



Package Type

Re-usable Type A package for the shipment of solid or liquid samples.

Certification

The package meets the requirements for DOT Spec 7A Type A Packages as defined in 49 CFR (HM 181) and IAEA TS-R-1.

Description

Package Design No CU106A is designed to be robust and simple to use. The package consists of a stainless steel open head outer Drum Design No CU106 which carries a stainless steel containment vessel Design No CU107 within polyethylene foam packing. The Drum Design No CU106 is a stainless steel MIL Spec 30 gal drum fitted with a lid and closure ring. The containment vessel Design No CU107 is a fabricated stainless steel vessel having a bolted flange closure fitted with an O-ring seal.

Containment

The containment system is the containment vessel Design No CU107, with the containment being provided by the welded stainless vessel walls and the bolted flange closure fitted with an O-ring seal. The lid is provided with a test point for periodic leakage testing. Secondary containment is provided by the product containers.

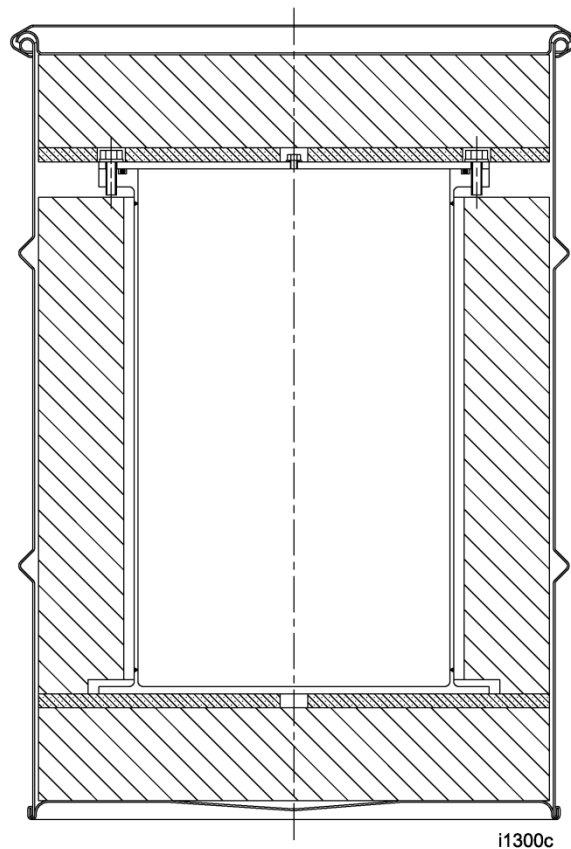
Approved Contents

Solid or liquid contents may be carried. Suitable product containers are required for liquid contents. Liquid capacity is nominally 20 litre (volume of containment vessel is 28 litre).

Maximum contents weight of containment vessel Design No CU107 (including the weight of any packing or additional shielding) is 66 lb (30 kg).

Radioactive contents are limited to A₁ for material in special form and A₂ for open form material, with the additional requirement that the external radiation levels of the package, as loaded and presented for transport, are within regulatory limits.

Section through Package Design No CU106A



Physical Data

Package CU106A	Outer Container CU106		Packing		Inner Container CU107	
External Diameter	19.75"	502 mm			13.80"	351 mm
External Height	28.00"	711 mm			19.40"	493 mm
Internal Diameter	18.25"	463 mm			11.00"	299 mm
Internal Height	26.25"	666 mm			18.25"	463 mm
Tare Weight	34 lb	15 kg	22 lb	10 kg	52 lb	24 kg

Weight of empty package - 108 lb (49 kg).

Maximum weight of package Design No CU106A (including contents) - 174 lb (79 kg).

Further Information

Don Edling, CROFT Inc., 1105 Old Cannons Lane, Louisville, KY 40209, USA
Tel: 502 896 8597 Fax 270 721 0025 Email: dedling@insightbb.com
Web site: www.croftltd.com